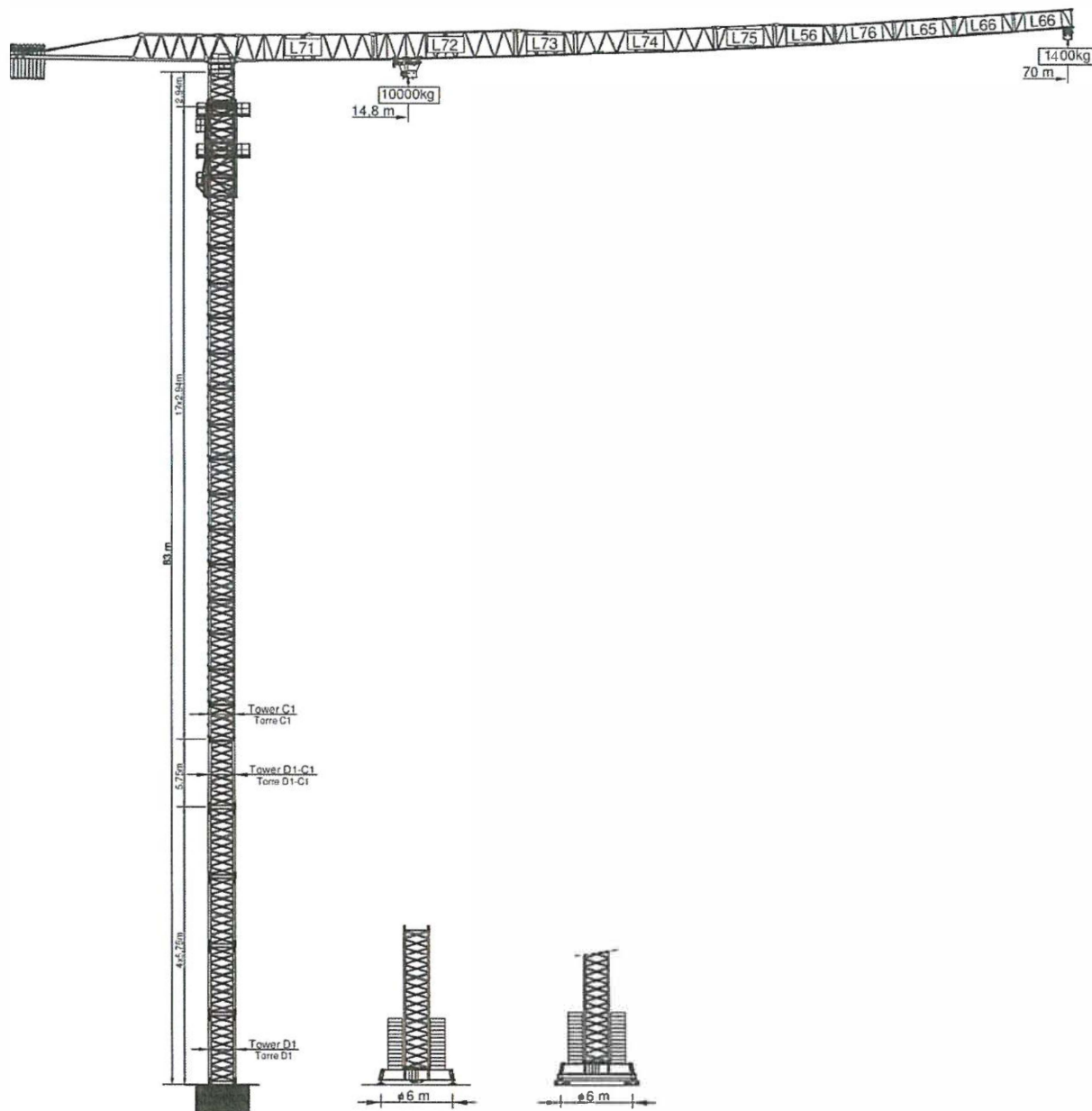


**P**

ОБЩИЙ ВИД SOIMA SGT 7018 TL  
(СПЕЦИАЛЬНАЯ ВЕРСИЯ СВОБОДНОСТОЯЩИЙ ШАССИ D1 И  
АНКЕРНОЕ ИСПОЛНЕНИЕ)

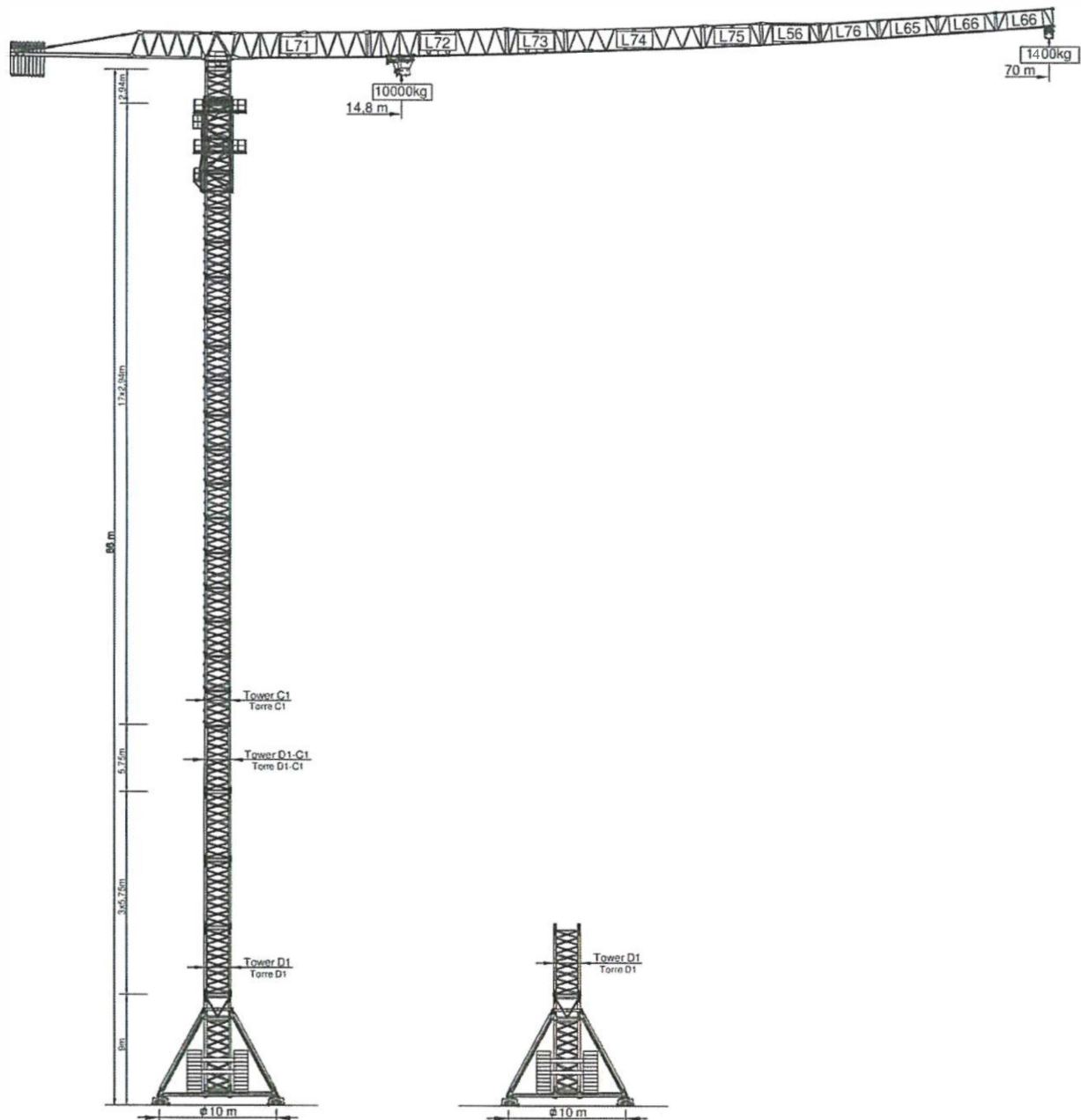
**RU**



**(P)**

ОБЩИЙ ВИД SOIMA SGT 7018 TL  
(СПЕЦИАЛЬНАЯ ВЕРСИЯ СВОБОДНОСТОЯЩИЙ) ШАССИ D2

**(RU)**



65m - 2.500kg

60m - 3.000kg

55m - 3.500kg

50m - 4.000kg

48m - 4.200kg

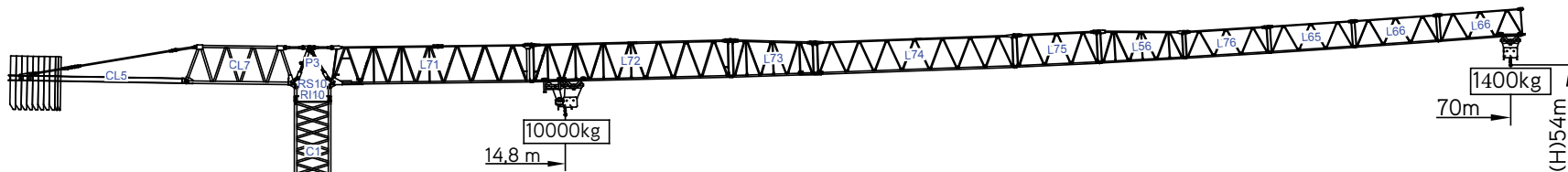
43m - 4.500kg

38m - 5.000kg

36m - 5.000kg

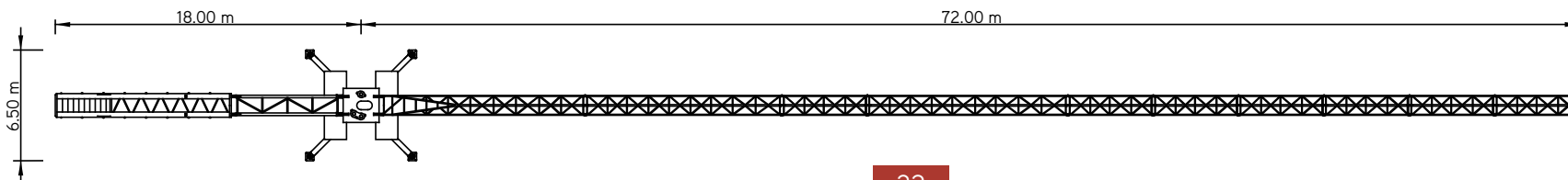
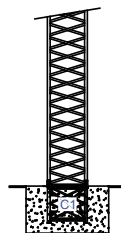
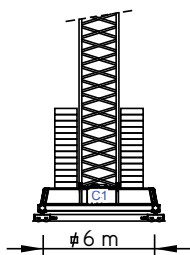
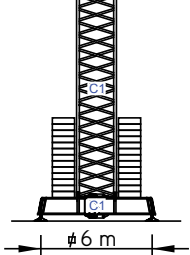
31m - 5.600kg

26m - 6.600kg



Cargas.Loads.Lasten.Charges.Cargas.Carichi.Yükler. ГРУЗОПОДЪЕМНОСТЬ

Icon	Jib Length	Jib Configuration	Kg/m M/KГ	m	Capacity (kg)													
					16	21	26	31	36	38	43	48	50	55	60	65	70	
18000 kg 8x2000 + 2x1000 kg	70m	L71+L72+L73+L74+L75 L56+L76+L65+L66+L66	14,8 m	9190	6790	5310	4310	3590	3350	2860	2470	2330	2040	1790	1590	1400		
18000 kg 8x2000 + 2x1000 kg	65m	L71+L72+L73+L74+L75 L56+L76+L65+L66	17,9 m	10000	8420	6630	5410	4540	4250	3650	3180	3010	2660	2360	2100			
17000 kg 8x2000 + 1x1000 kg	60m	L71+L72+L73+L74+L75 L56+L76+L65	19,3 m	10000	9140	7210	5900	4960	4650	4000	3490	3320	2930	2600				
17000 kg 8x2000 + 1x1000 kg	55m	L71+L72+L73+L74+L75 L56+L76	20,2 m	10000	9620	7600	6230	5240	4910	4240	3700	3520	3100					
16000 kg 8x2000 kg	50m	L71+L72+L73+L74+L75 L56	20,6 m	10000	9860	7790	6390	5380	5050	4360	3800	3600						
14000 kg 7x2000 kg	48m	L71+L72+L73+L74+L75 L76+L65	20,7 m	10000	9950	7860	6450	5430	5100	4400	3800							
12000 kg 6x2000 kg	43m	L71+L72+L73+L75+L56 L76	19,7 m	10000	9450	7460	6110	5140	4820	4100								
11000 kg 5x2000 + 1x1000 kg	38m	L71+L72+L73+L75+L56	19,2 m	10000	9180	7240	5930	4980	4600									
9000 kg 4x2000+1x1000 kg	36m	L71+L73+L75+L56+L76 L65	18,8 m	10000	9070	7160	5860	4800										
8000 kg 4x2000 kg	31m	L71+L73+L75+L56+L76	18,5 m	10000	8930	7040	5600											
7000 kg 3x2000+1x1000 kg	26m	L71+L73+L75+L56	17,9 m	10000	8650	6600												








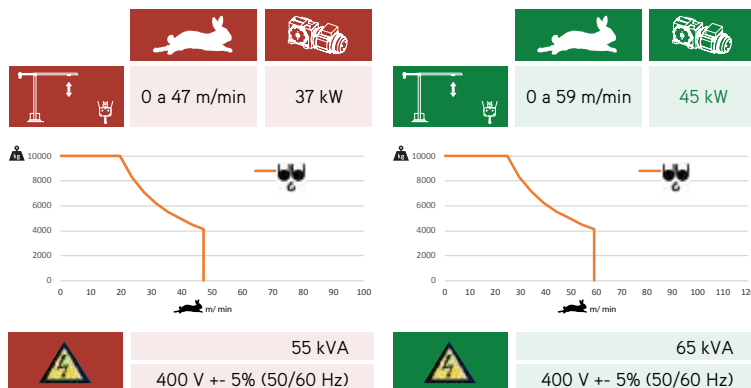
# SGT 7018TL

70m - 1.400kg

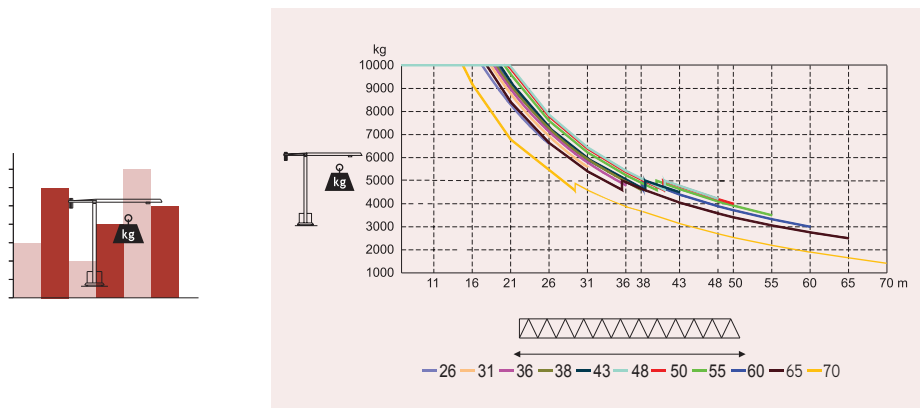
10.000Kg

Características . Characteristics . Eigenschaften  
Caractéristiques . Caratteristiche . Caratteristiche  
Özellikler . ХАРАКТЕРИСТИКИ


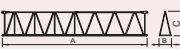

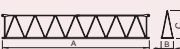








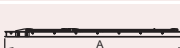



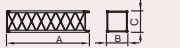
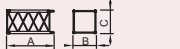

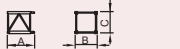


	
	0 a 1 r.p.m. 3x5 daN.m
	0 a 60 m/min 5,5 kW
	0-10 m/min 2x4 kW



Velocidade de elevação . Hoisting speed . Hubgeschwindigkeit . Vitesse d'élevation .  
Velocidad de elevación . Velocità di sollevamento . Kaldırma hızı (m/min) .  
Скорость подъема (м/мин)



Elementos . Parts . Teile . Éléments . Elementos . Elemento . Parçalar . ЭЛЕМЕНТЫ

		A (mm)	B (mm)	C (mm)	kg	Code
L71		11970	1900	2900	6500	
L72		11970	1160	2260	2500	
L73		5230	1160	2260	750	
L74		11950	1160	1950	1400	
L75		5200	1160	1950	500	
L56		5200	1160	1930	590	
L76		5180	1160	1610	370	
L65		5110	1160	1610	330	530 70 18
L66		5110	1160	1610	2x300 600	
RS10 R110		2620	2180	2150	8000	
P3		2430	1300	760	1270	
CL7		6475	1220	2300	2600	
CL5		10550	1500	500	3720	
CP3		1160	165	3140	2x1000 2000	704 10 00
CP2		1160	330	3140	8x2000 16000	704 20 00
TOTAL					47130	
C1		12000	2180	2180	4200	509 12 00
C1		6130	2180	2180	2200	509 06 00
C1		3195	2180	2180	1200	508 12 03
C1		3195	2250	2250	1360	509 06 03
C1		2280	2150	2150	850	509 06 02
C1		8725	800	1370	4600	609 00 02
C1		4200	380	1370	2x1700 3400	
TOTAL					8000	